



ELMA

Progress Report
2021 & 2022



Established in 2019, the **Kenya Paediatric Fellowship Programme (KPFP)** was created to expand the capacity of Kenyan institutions to select, train, and deploy pediatric subspecialists and nurses, and to increase access to specialized services for children in Kenya and the East Africa region.

Working alongside the Ministry of Health, KPFP is a consortium made up of Aga Khan University, Clinton Health Access Initiative, Gertrude’s Children’s Hospital, Kenya Paediatric Association, Moi University, and University of Nairobi.

To date, KPFP has enrolled 124 pediatric nurses and 24 pediatricians in subspecialty training programs. As of September 2022, 44 (34.4%) fellows successfully completed their training and have been deployed to 38 hospitals across 32 counties in Kenya. The remaining fellows are on track to graduate by December 2023.



Front and inside covers: Pediatric nurses care for their young patients at Gertrude’s Children’s Hospital in Nairobi. The nursing school at Gertrude’s offers training programs in general pediatric and pediatric critical care nursing.

Photo credit: Atieno Muyuyi

Focused primarily in Africa, ELMA aims to improve the lives of children, and the families and communities that support them.

We invest in high-impact organizations that further the objectives of The ELMA Group of Foundations. Select investments that were contracted in 2021 and 2022 are featured throughout these pages.

- 2 **Introduction**
- 10 **ELMA COVID-19 Response**
- 20 **The ELMA Foundation**
- 38 **The ELMA Community Grants Program**
- 52 **The ELMA Relief Foundation**
- 58 **The ELMA Growth Foundation**
- 62 **The ELMA Music Foundation**
- 70 **The ELMA Vaccines & Immunization Foundation**
- 72 **The ELMA South Africa Foundation**
- 76 **The ELMA Caribbean Foundation**
- 78 **The ELMA Climate Foundation**
- 80 **Measurement & Evaluation**
- 82 **The ELMA Philanthropies**



LABE / Jumba Martin

Throughout these pages, you will read about the incredible work ELMA was honored to support in 2021 and 2022.

Here are some highlights of ELMA's and our partners' progress toward improving the lives of children, and the families and communities that support them.

COVID-19 response: From March 2020 through the end of 2022, The ELMA Group of Foundations invested in **79 organizations** working in over **30 countries** to respond to the immediate and long-term challenges presented by the COVID-19 pandemic. Collectively, these investments supported partners to:

- Procure and distribute over **30 million pieces of PPE**
- Provide COVID-19-related training and support to over **2 million healthcare workers**
- Disseminate COVID-19 education, testing, and treatment services to over **17 million people**
- Contribute to vaccination efforts for **132 million individuals across 14 African countries**
- Procure and distribute **4,335 high-quality pulse oximeters** and **238 ventilators**
- Increase oxygen production and distribution at five oxygen plants in Kenya and Ethiopia
- Establish **10 new oxygen plants** in Kenya, Ethiopia, and Nigeria

Humanitarian Relief: In 2021 and 2022, The ELMA Relief Foundation supported partners to:

- Support internally displaced communities and rebuild health services in Ethiopia
- Respond to the Ebola outbreak in Uganda
- Mitigate the impacts of widespread civil unrest and conflict, flooding, and wildfires in South Africa

Health Workforce: ELMA's Health Workforce investments aim to increase the quality and quantity of the pediatric health workforce. From 2018-2022, our grantee partners have supported, across 23 countries¹, the training and deployment of approximately:

- **19,000 community health workers**
- **380 pediatric nurses and midwives**
- **130 pediatric medical specialists and subspecialists**

93% of the nursing and medical postgraduates supported by ELMA have been retained in the public sector one year post deployment. This focus area's key strategic initiatives, African Paediatric Fellowship Programme (page 24) and Kenya Paediatric Fellowship Programme (front and inside cover), continue to exceed expectations, with the **training and deployment of approximately 300 pediatric medical providers** completed or in progress by the end of 2022.

Maternal & Newborn Health: ELMA's Maternal and Newborn Health focus area has the long-term goals of making pregnancy and delivery safer for women and ensuring that health systems prioritize newborns. From 2018 through early 2022, ELMA-supported maternal and newborn health initiatives have **reduced overall newborn deaths by 13%** in ~310 supported health facilities across eight African countries². Approximately **4.8 million births** will be supported by the end of the grant periods for these investments.

¹ Botswana, Cameroon, Democratic Republic of the Congo, Eswatini, Ethiopia, Ghana, Kenya, Lesotho, Liberia, Malawi, Mali, Mauritius, Mozambique, Namibia, Nigeria, Sierra Leone, Somalia, South Africa, Sudan, Tanzania, Uganda, Zambia, Zimbabwe

² Ethiopia, Kenya, Malawi, Nigeria, South Africa, Tanzania, Uganda, Zambia



Ubuntu Pathways

AIDS-Free: ELMA's AIDS-Free investments support organizations that work toward early identification, treatment initiation, and retention of HIV+ children and adolescents. Since 2014, ELMA's AIDS-Free grantees have contributed to:

- Testing over 12 million children and adolescents
- Identifying approximately 300,000 new cases in 11 countries³
- Initiating approximately 72% of these cases on antiretroviral therapy

Among HIV+ children and adolescents recently tracked for follow-up, the average virological suppression rate and one-year treatment retention rate was 77% and 80%, respectively. ELMA will continue to invest alongside global health partners and governments to ensure an AIDS-Free future for children.

³ Côte d'Ivoire, Eswatini, Ethiopia, Kenya, Lesotho, Malawi, Nigeria, South Africa, Uganda, Zambia, Zimbabwe

Early Childhood Development (ECD): From late 2017 to early 2022, ELMA’s investments supported access to ECD programs for **over 306,000 children** across five African countries⁴, and provided training to **10,320 ECD practitioners and 51,470 caregivers**. ELMA’s partners have strengthened national early childhood programs by supporting governments to deliver, measure, and improve ECD services. In South Africa, where ELMA began investing in ECD in 2006, ELMA’s grantee partners contributed to a doubling of the government’s annual budget for per child ECD subsidies to ZAR2.7 billion starting in 2022.

The ELMA Community Grants Program (ECGP): In 2021 and 2022, The ELMA Community Grants Program supported **117 community-based organizations from 13 African countries**⁵.

ECGP partners **implement a wide range of activities using integrated approaches that ensure holistic support for children, families, and their communities.**

The services provided by ECGP partners include:

- HIV and oncology treatment
- Therapy and care for children living with disabilities
- Sexual and reproductive health services
- Food security for vulnerable households
- Empowerment of girls and young women, particularly those at risk of or in early marriages

In 2023, ECGP will spin out into a new Africa-based grantmaking foundation, **Masana wa Afrika** (page 49).

⁴ Ethiopia, Ghana, Rwanda, South Africa, Uganda

⁵ Botswana, Eswatini, Kenya, Lesotho, Malawi, Mozambique, Namibia, Rwanda, South Africa, Tanzania, Uganda, Zambia, Zimbabwe



Lwala Community Alliance / Skills Cinematic



Neglected Tropical Diseases (NTDs): In partnership with our grantees, governments, and co-funders such as the Children’s Investment Fund Foundation and the Bill and Melinda Gates Foundation, since 2015, ELMA has been supporting the elimination of NTDs affecting hundreds of millions of people in Africa. These NTDs include: trachoma, onchocerciasis (river blindness), lymphatic filariasis, schistosomiasis, soil-transmitted helminths, and more recently, human African trypanosomiasis and visceral leishmaniasis.

ELMA support aims to **eliminate trachoma** as a public health problem in 14 countries⁶ in Africa, of which four countries (Benin, Botswana, Kenya, and Namibia) are expected to eliminate trachoma before 2026. As of April 2022, ELMA has contributed to 65,000 trachoma surgeries and over 34 million trachoma treatments. As a result, **11.3 million fewer people are at risk of trachoma** in supported countries.

ELMA has supported seven countries⁷ to **eliminate onchocerciasis**. Notably, Niger is the first African country verified by the World Health Organization to reach elimination, with Uganda expected to follow in 2026. Funding toward **lymphatic filariasis** has enabled eight countries to make progress toward elimination, with Chad, Kenya, Mali, Niger, Senegal, and Zimbabwe expected to achieve elimination before 2029, and Ethiopia and Sudan in the years thereafter.

For **schistosomiasis and soil-transmitted helminths**, ELMA support to date has focused on **interruption of transmission** in Rwanda, Zimbabwe, and four counties in Kenya, and accelerated national progress toward interruption in Ethiopia.

ELMA is proud to be a financial partner to change-makers across Africa and the world. The progress mentioned above is only possible because of their vision and drive for a brighter future for everyone.

⁶ Benin, Botswana, Burkina Faso, Cameroon, Côte d’Ivoire, Ethiopia, Guinea, Guinea-Bissau, Kenya, Namibia, Nigeria, Senegal, Zimbabwe

⁷ Chad, Ethiopia, Mali, Niger, Senegal, Sudan, Uganda

COVID-19 Response

In 2021 and 2022, The ELMA Group of Foundations supported children, families, and communities – especially in Africa – impacted by the continued effects of the COVID-19 pandemic

FOCUS AREAS

- Direct COVID-19 Response
- Protecting Essential Services
- Supporting Early Education & Learning
- Safety Net Support for Vulnerable Communities
- COVID-19 Vaccines



Grantee
Shining Hope for Communities (SHOFCO)

Geography
Kenya

Focus Area
Safety Net Support for Vulnerable Communities



Opera San Francesco Saverio (CUAMM) / Nicola Berti

Direct COVID-19 Response

These investments contributed to controlling the spread of COVID-19 and mitigating its direct health impacts

Select investments contracted in 2021 & 2022

- Alliance for International Medical Action (ALIMA)**
Central African Republic, Chad, Democratic Republic of the Congo, Guinea, Mali, Mauritania, Niger, Nigeria

Project support for technical assistance to Ministries of Health to diagnose and manage severe and critical cases of COVID-19 and COVID-19 vaccine support
- Opera San Francesco Saverio (CUAMM)**
Uganda

Project support for COVID-19 response efforts including providing health worker training, PPE, oxygen, and other medical supplies in nine districts serving 600,000 people in Karamoja
- Reach Digital Health (formerly Praekelt Foundation)**
South Africa

Project support for the next phase of Health Alert, a COVID-19 information dissemination system

- St. Raphael of St. Francis Hospital Nsambya (Nsambya Hospital)**
Uganda

Project support for COVID-19 response activities including providing health worker training, PPE, oxygen, and other medical supplies at Nsambya Hospital
- The Solidarity Fund**
South Africa

Contribution to fund initiatives that augment the government's COVID-19 response
- South African Allergy and Clinical Immunology Foundation**
South Africa

Project support to facilitate the rollout of low-cost asthma pump spacers and AfriValves for the treatment of bronchospasm during the COVID-19 pandemic
- South African Medical Research Council**
South Africa

Project support to increase COVID-19 testing capacity by the National Health Laboratory Service through procurement, training, and distribution of rapid, quality results through improved automated equipment
- Wits Health Consortium**
South Africa

Project support for the Wits Paediatric Fund to procure and distribute essential equipment and supplies for COVID-19 care for children, adolescents, and pregnant women to academic hospitals

Select investments contracted in 2021 & 2022

Protecting Essential Services

These investments helped to ensure that maternal, newborn, and child healthcare was maintained during the pandemic

Mildmay Uganda *Uganda* Project support to sustain essential health services, adapt pediatric HIV/AIDS services, and provide COVID-19 response in six districts

Stichting PharmAccess International *Kenya* Project support to deploy digital health tools to help facilities prepare for COVID-19 and to maintain essential maternal and newborn health services during the pandemic

University of Cape Town *sub-Saharan Africa* Project support to provide African medical specialist trainees with living expense relief in response to the impact of COVID-19 on training resources

William Marsh Rice University *Kenya, Malawi, Nigeria, Tanzania* Project support to strengthen the COVID-19 preparedness and response of the Rice360 Institute of Global Health's Newborn Essential Solutions and Technologies (NEST360) program in their hospitals of operation

Wits Health Consortium *South Africa* Project support to mitigate child health service disruptions due to COVID-19 in Tshwane district



The Unlimited Child / Mlungisi Mbele

Supporting Early Education & Learning

These investments helped reduce the impacts of school closures on early childhood development and learning

Aga Khan Foundation *Uganda* Project support for remote ECD activities, and to support the Ministry of Education and Sports as it supports early learning and transition-back-to-in-person plans during and post COVID-19

Ilifa Labantwana *South Africa* Project support to provide food and nutrition support to 14,000 children and 2,713 ECD staff made vulnerable by COVID-19, and enable 515 unregistered ECD sites to meet the COVID-19 re-opening requirements

The Unlimited Child *South Africa* Project support to assist with the reopening and recovery of the 3,050 ECD centers in the organization's network impacted by the COVID-19 pandemic



Safety Net Support for Vulnerable Communities

These investments supported the basic needs of particularly vulnerable communities during the pandemic

Scalabrini Centre of CT
South Africa
Project support for assistance to vulnerable migrants, refugees, and asylum seekers in the Western Cape during the COVID-19 pandemic

Shining Hope for Communities (SHOFCO)
Kenya
Contribution to support COVID-19 relief response in informal settlements surrounding Nairobi

Ubuntu Pathways
South Africa
Contribution for emergency COVID-19 relief response in the townships surrounding Port Elizabeth, Eastern Cape

COVID-19 investments contracted in 2021 & 2022

Future Families
South Africa
Contribution for social support services, access to medical treatment, and direct financial relief for destitute refugee and migrant families and individuals

Refugee Social Services
South Africa
Project support for assistance to vulnerable migrants, refugees, and asylum-seekers in KwaZulu-Natal and Eastern Cape during the COVID-19 pandemic

Select investments contracted in 2021 & 2022

COVID-19 Vaccines

These investments supported the rollout of COVID-19 vaccines, particularly across Africa

Children's Health Fund
United States
Project support to deliver COVID-19 vaccinations, routine immunizations, and healthcare to children and adolescents in underserved communities

Clinton Health Access Initiative
South Africa
Project support for detection, assessment, and monitoring of adverse effects and post market surveillance of SARS-CoV-2 vaccines through provision of technical assistance to the South African Health Products Regulatory Authority

The DG Murray Trust
South Africa
Project support to provide technical assistance to the national, provincial, and district Departments of Health to manage SARS-CoV-2 vaccine rollout

JSI Research and Training Institute
Kenya, Malawi, Tanzania
Project support for COVID-19 technical assistance to Ministries of Health at national and subnational levels, including training vaccinators, strengthening data systems, and setting up vaccination outreach sites

Right to Care
South Africa
Project support to deploy mobile vaccination teams to reach at least 67% COVID-19 vaccine coverage in underserved rural populations of Eastern Cape

South African Medical Research Council
South Africa
Project support for an open label Phase 3b trial of the single dose Johnson & Johnson COVID-19 vaccine in 500,000 healthcare workers that initiated the rollout of vaccines

Touch Foundation
Tanzania
Project support for improving COVID-19 vaccine uptake through technical support and financial assistance to the President's Office Regional Administration & Local Government (PO-RALG)

United States Fund for UNICEF
Botswana, Côte d'Ivoire, Eswatini, Ghana, Uganda
Project support to provide six Ministries of Health with technical assistance to strengthen national COVID-19 vaccine coordination, planning, and monitoring, and to scale vaccine delivery to priority groups

University of Limpopo Trust
South Africa
Project support to set up 42 COVID-19 outreach vaccine sites in Limpopo

Institut Pasteur de Dakar



VillageReach
Malawi
Project support for COVID-19 vaccine rollout to reach 20% of Malawians by digitizing vaccine supply chain tools, training 8,000 vaccinators, and expanding a digital health communication platform

The WHO Foundation
Global
Contribution to match USD1 million raised through online contributions to the Go Give One campaign to increase the availability of COVID-19 vaccines in low-income countries



The ELMA Foundation

invests in organizations
that improve the lives
of children in Africa

FOCUS AREAS

Health Workforce
Maternal & Newborn Health
Early Childhood Development
AIDS-Free
Neglected Tropical Diseases



Grantee
The END Fund

Geography
Africa

Focus Area
Neglected Tropical Diseases



APFP / Jumba Martin

Health Workforce

These investments aim to increase the quality and quantity of pediatric health workers

Select investments contracted in 2021 & 2022

- Amref Health in Kenya**
Kenya

Project support to institutionalize community health workers by strengthening financing, leadership and governance, policy, and coordination for an integrated community health system
- Baylor College of Medicine Children's Foundation**
Uganda

Project support to expand Uganda's Pediatric Hematology Oncology (PHO) specialty training for 18 new PHO fellows and 17 specialty nurses
- Clinton Health Access Initiative**
Rwanda

Project support to secure financial resources and support the Government of Rwanda and national institutions to implement the "National Strategy for Health Professions Development 2020-2030"

- Opera San Francesco Saverio (CUAMM)**
Uganda

Project support to expand delivery of competency-based nursing/ midwifery education, and increase production of enrolled nurses, midwives, and anesthetic officers in Karamoja and Lango regions
- Rwanda Biomedical Centre**
Rwanda

Project support for equipment and infrastructure to strengthen pediatric workforce training, as part of the Government of Rwanda's "National Strategy for Health Professions Development 2020-2030"
- Seed Global Health**
Uganda

Project support to institutionalize competency-based clinical education to improve the quality of emergency care and maternal, newborn, and child health pre-service training, and to launch new postgraduate programs in midwifery and emergency care
- United States Fund for UNICEF**
Uganda

Project support to provide technical assistance to finalize, disseminate, and pilot implementation of the National Community Health Strategy in three districts
- University of Rwanda**
Rwanda

Project support to help the implementation of the Government of Rwanda's "National Strategy for Health Professions Development 2020-2030" by establishing the faculty, equipment, and infrastructure to build and sustain training for the pediatric workforce

Select investments contracted in 2021 & 2022

The University of Zimbabwe - College of Health Sciences Zimbabwe Project support for the scholarships of 16 pediatricians to be trained and deployed to central and provincial hospitals, serving 6.7 million children

Vanderbilt University Medical Center Africa Project support to scale-up a regional pediatric anesthesia training network across five African countries, with the goal of graduating 38 new pediatric anesthesiologists and training over 500 non-physician anesthesia providers

Since its launch in 2008, the African Paediatric Fellowship Programme (APFP) has trained 279 child health specialists from 21 African countries.

APFP is a partnership between the University of Cape Town Department of Paediatrics and Child Health, University of KwaZulu-Natal Centre for Rural Health, and University of Witwatersrand to strengthen the pediatric workforce in Africa.

Among the APFP fellows using their leadership skills and medical expertise to improve health outcomes for children are Dr. Victoria Nakibuka (pictured on page 22) and Dr. Joyce Balagadde Kambugu (pictured at right).

Dr. Victoria is the first neonatologist in Uganda and head of pediatrics at St. Francis Hospital Nsambya. She set up one of the first neonatal intensive care units in Uganda and established the first human milk bank in the country. She is also a member of the national newborn steering committee and national maternal and perinatal review committee.

As Uganda’s first female pediatric oncologist, **Dr. Joyce** spearheaded the establishment of Uganda’s first dedicated pediatric oncology service and later a training program in pediatric oncology. She is the head of pediatric oncology at the Uganda Cancer Institute and a research investigator with the UCI-Hutchinson Center Cancer Alliance.



APFP / Jumba Martin

Maternal & Newborn Health

These investments aim to make pregnancy and delivery safe and ensure newborns receive appropriate care

Baylor College of Medicine Children's Foundation Uganda
Uganda
Project support to institutionalize newborn care approaches and implement a proven intervention package for small and sick newborns in eight Mid-Western districts

Clinton Health Access Initiative
Ethiopia, Kenya, Liberia, Nigeria, Rwanda, Uganda
Project support to increase equitable access to medical oxygen in low- and middle-income countries by helping governments build sustainable oxygen ecosystems in partnership with PATH

The DG Murray Trust
South Africa
Project support to repurpose the COVID-19 Vaccination Contact Center to support and strengthen the HIV/TB and Maternal Newborn Child Health Programs

Jacaranda Health
Kenya
Project support to advance the quality and uptake of maternal and newborn health services through digital health platforms

Kisumu Medical and Educational Trust
Kenya
General support for an organization working to expand and promote access to affordable, quality health and education services for underserved communities, with a focus on reproductive, maternal, newborn, child, and adolescent health

Lifebox Foundation
Africa
General support for an organization that improves the safety of surgery and anesthesia in low-resource settings through the provision of essential equipment and training

Makerere University School of Public Health
Uganda
Project support to institutionalize and increase access to specialized neonatal services through in-service training and mentorship of health workers and implementation of a proven intervention package for small and sick newborns

PATH
Burkina Faso, Democratic Republic of the Congo, Kenya, Malawi, Senegal, Tanzania, Zambia
Project support to increase equitable access to medical oxygen in low- and middle-income countries by helping governments build sustainable oxygen ecosystems in partnership with CHAI



Jacaranda Health / Jjumba Martin

Early Childhood Development

These investments aim to improve access to quality early childhood care and education

- The African Early Childhood Education Network**
Africa

General support for an organization supporting African organizations, governments, and ECD networks to design and roll out best ECD practices, policies, and tools
- Boston College**
Rwanda

Project support for a follow-up study on FXB Rwanda's Sugira Muryango initiative, in which community workers conduct home visits to improve parent/child interactions and outcomes
- Cape Educational Trust - Early Learning Resource Unit (ELRU)**
South Africa

General support for an organization increasing access to direct ECD services for excluded children and increasing its support to practitioners running ECD centers or playgroups

- The Equal Education Law Centre Trust**
South Africa

General support for a social justice law clinic working to support access to quality ECD and education using strategic litigation, advocacy, and policy development support
- Ethiopian School Readiness Initiative**
Ethiopia

General support for an organization providing quality ECD services to over 5,000 children annually including teacher training, health checks, deworming, and ECD materials development
- Ilifa Labantwana**
South Africa

General support to an organization focused on ensuring 1 million children ages 0-5 are accessing quality, government subsidized ECD services and are developmentally on track to begin school
- Innovations for Poverty Action**
Ghana

Project support to partner with education stakeholders across government to develop practical, evidence-based implementation and monitoring plans for the country's new kindergarten policy
- Kidogo**
Kenya

General support to a social enterprise supporting a network of entrepreneurial women to improve their childcare micro-businesses
- Lively Minds**
Ghana

Project support to scale an evidence-based ECD program in partnership with the Government of Ghana to improve parenting practices and kindergarten quality, reaching 8,000 teachers and 1 million children

*Funded by The ELMA Foundation (UK)



SmartStart Early Learning

ELMA supports a coalition of 12 early childhood partners in South Africa working to ensure approximately 1.8 million children ages 0-2 access an essential package of early childhood services, and approximately 2.1 million children access high-quality early education.

These ELMA partners are: Cape Educational Trust - Early Learning Resource Unit (ELRU), The DG Murray Trust - Grow Great Campaign, The Early Care Foundation, The Equal Education Law Centre Trust, Ilifa Labantwana, Khululeka, SmartStart Early Learning, Training and Resources in Early Education (TREE), University of Cape Town (Children's Institute), University of Pretoria (Centre for Child Law), The Unlimited Child, and Wordworks

THE ELMA FOUNDATION

Select investments contracted in 2021 & 2022

- Right to Play**
Ghana

Project support to roll-out a national kindergarten teacher training, coaching, and support package in partnership with government and Sabre Education

- Sabre Education**
Ghana

General support for an organization focused on improving the quality of national pre-service and in-service kindergarten teacher training in partnership with the Ministry of Education

*Funded by The ELMA Foundation (UK)

- SmartStart Early Learning**
South Africa

General support for a social franchise aiming to provide 1 million children ages 3-4 with quality early learning programs annually by 2026

- Spring Impact**
Kenya, Rwanda

A service contract to provide technical assistance to a coalition of Kenyan and Rwandan ECD stakeholders to develop and test a shared plan to strengthen childcare support systems

- Tiny Totos**
Kenya

General support to a social enterprise providing quality improvement services to a network of self-sustaining, low-cost ECD centers in urban neighborhoods

- Training and Resources in Early Education (TREE)**
South Africa

General support to provide reopening, stabilizing, and rebuilding support to 450 ECD centers and programs serving 20,000 children across three provinces

- United States Fund for UNICEF**
Rwanda

Project support to provide technical assistance to the National Childhood Development Agency to analyze current ECD financing and plan for increased ECD investment and coordination

- University of Cape Town (Children's Institute)**
South Africa

General support for South Africa's leading advocacy and policy development institute focused on increasing the availability of evidence-based research to support improvements in policies, laws, and interventions affecting children

- University of Pretoria (Centre for Child Law)**
South Africa

Project support for advancing the realization of children's rights in South Africa

- The Unlimited Child**
South Africa

General support for an organization focused on scaling up a quality improvement model in 6,000 ECD centers reaching 500,000 children in the poorest three income quintiles by 2025

- Wordworks**
South Africa

General support for an organization that develops content and provides technical input for both the private and government sectors to support early language and literacy development in the first eight years of children's lives

AIDS-Free

These investments aim to ensure that children and adolescents with HIV are identified, treated early, and maintained on treatment

- Anova Health Institute**
South Africa

Project support for involvement in ELMA's Unfinished Business Phase II to scale effective pediatric and adolescent HIV case finding and ART linkage strategies, improve treatment models, and build an investment case for national adoption

- Paediatric AIDS Treatment for Africa (PATA)**
Africa

General support to an organization that strengthens pediatric and adolescent HIV service delivery by providing technical support and accelerated access to optimal pediatric formulations in high-burden countries

- The WHO Foundation**
sub-Saharan Africa

Project support for the management of the WHO's Global Accelerator for Pediatric Formulations (GAP-f) network, which aims to accelerate access to safe, effective, quality, affordable pediatric medicines

- Zvandiri**
Africa

Project support to expand a peer-led service delivery model supporting children and adolescents living with HIV to five countries, while adapting to virtual training and mentorship to allow for effective scale-up during COVID-19 and beyond





Neglected Tropical Diseases

These investments aim to control and, where possible, eliminate NTDs

Select investments contracted in 2021 & 2022

The END Fund Project support to deploy lifesaving treatments for visceral leishmaniasis for approximately 11,000 people per year
Ethiopia, Kenya, South Sudan, Sudan, Uganda

Sightsavers Project support to fund mass drug administrations for onchocerciasis and lymphatic filariasis to treat 51.2 million people, provide 6,000 trachoma surgeries, and undertake lymphatic filariasis impact surveys in Chad, Liberia, and Nigeria
Africa

*Funded by The ELMA Foundation (UK)

Special Opportunities

On occasion, we invest in programs and organizations that meet The ELMA Foundation's mission but are outside or cut across our main focus areas

African Center of Excellence for Genomics of Infectious Diseases
Nigeria

Project support to build Sentinel, a disease surveillance and pandemic prevention system, across Nigeria and West Africa

Reach Digital Health
South Africa

General support for a digital health organization leading the development and scale-up of HealthConnect, an integrated communication platform that connects public health managers, health facilities, and clients to improve access to quality health services

Stanford Programme (Cape Town)
Africa

Project support for Digital Medical Education International Collaborative (Digital MEDIC) to deliver high quality digital video content for health worker education, training, and service delivery

UNICEF
Africa

Contribution for the Secretariat of the Education Outcomes Fund, which aims to support governments to develop and manage outcomes funds that pay for measurable learning results according to national education priorities





Shonaquip / Sipho Mpongo

Impact Investments



In addition to ELMA's core grantmaking, from time to time, ELMA invests in companies and pooled investment vehicles that aim to improve healthcare and education for children in Africa.

The following were active impact investments in 2021 and 2022:

- Adjuvant Capital** Investment in a private equity fund that aims to drive meaningful public health improvements by investing in technologies targeted toward low- and middle-income countries

- CarePay International** Equity investment in a mobile health wallet platform that links participants, healthcare providers, and healthcare payers to provide fast, efficient, and transparent treatment and payment

- CureVac** Equity investment in a biotechnology company that focuses on using messenger RNA to develop new therapeutics and vaccines

- Global Access Health (GAH)** Loan to a not-for-profit company that aims to provide affordable, quality, rapid diagnostic tests to low- and middle-income countries by performing the complete value chain from R&D to regulatory approval and manufacturing, and establishing partnerships to manufacture diagnostic tests in Africa

- GroFin Small Growing Business Fund** Investment in a debt fund focusing on small and growing businesses in high-impact sectors such as health and education across Africa; GroFin's investment is coupled with support services to give the underlying businesses the best chance at repaying debt and becoming sustainable

- Investment Fund for Health in Africa II** Investment in a private equity fund that targets both a financial and social return by investing in private healthcare companies in sub-Saharan Africa

- Medical Credit Fund** Debt investment in a fund that provides loans, alongside local banks, to healthcare providers serving poor and underserved communities; all borrowers participate in a quality improvement program aimed at increasing the quality of services offered by the provider

- Mwabu Group** Equity investment in an education technology company that creates interactive e-learning content and resources for primary school students and teachers focused on local languages in Zambia

- Shonaquip** Loan to a social enterprise that designs, manufactures, supplies, and provides training on the proper usage of affordable mobility and support devices for children in low- and middle-income African countries

- SPARK Schools** Equity investment in a private company that has established a chain of affordable primary schools reaching a market segment that currently has few quality options; SPARK uses a blended learning model with highly trained teachers and technology to keep costs under control

The ELMA Community Grants Program

supports community-based organizations serving children and families across Southern and East Africa

Governments, markets, and large non-governmental organizations often do not reach the most marginalized and vulnerable children; community-based organizations fill this gap.

Launched in 2012, The ELMA Community Grants Program (ECGP) provides grantees with flexible funding as well as tailored capacity-strengthening in the areas of fundraising, financial management, leadership, measurement and evaluation, and program development.



Fr. Alex You Memorial School

Grantee
Fr. Alex You Memorial School

Geography
Uganda

Focus Area
The ELMA Community Grants Program

ECGP investments active in 2021 & 2022

BOTSWANA

- Botswana Retired Nurses Society** Provides holistic support to community members impacted by HIV/AIDS
- Learn To Play – Ithute Go Tshameka** Provides quality early learning programs to children in low-income communities
- Moremogolo Trust t/a Bana Ba Metsi** Provides education, nutritional support, rehabilitation support, and skills building at a primary school for boys

ESWATINI

- Kwakha Indvodza** Mentors boys and young men and provides access to health and counseling services, financial management education, and vocational skills training
- Moya Trust** Provides holistic care to orphaned and vulnerable children in the rural communities of the Lombambo Lomdzala area
- Siphilile Maternal and Child Health** Provides health and nutrition home-based services to pregnant mothers and vulnerable children in disadvantaged peri-urban areas in Manzini District
- Vusumnotfo** Trains community members on social, economic, and agricultural development, and trains teachers and caregivers on ECD best practices in the rural area Ngonini in the Hhohho region

KENYA

- The Action Foundation** Provides occupational therapy, feeding, quality education, and livelihood support to children and youth with disabilities
- Ewang’an Nadede Advocacy Initiative** Provides education, healthcare, and nutrition support to girls at risk of female genital mutilation and early marriage in pastoralist communities
- Hatua Network Organization** Provides education sponsorship, library services, feeding, and psychosocial support to vulnerable children and youth
- Kakenya’s Dream** Provides quality education, medical care, shelter, and nutritional support to marginalized girls in pastoralist communities
- Little Rock ECD Centre** Provides inclusive ECD services, education, and housing support to special needs children, orphans, and vulnerable children
- Pepo La Tumaini Jangwani** Provides support to child-headed households and families affected by HIV/AIDS, and empowers the poorest families in pastoral communities
- Riziki Kenya** Provides orphans and other vulnerable children with access to quality education, healthcare, and improved nutrition in Kibera, Kawangare, and Machakos

- St. Vincent de Paul Community Development Organization** Provides education, healthcare, and nutrition support to girls at risk of female genital mutilation and early marriage in pastoralist communities
- Stara Peace Women Organization** Provides education, food, and psychosocial support to orphans and vulnerable children
- Tumaini International Trust** Provides education sponsorship and medical care to orphans and vulnerable children, and training for caregivers and communities in income-generating activities
- Women’s Institute for Secondary Education and Research** Provides education and health support to girls and their communities

LESOTHO

- Phelisanong Pitseng with Disabled Group** Provides disabled, orphaned, and vulnerable children with quality education, residential care, nutrition, health, and basic services
- Thuso-E-Tla-Tsoa-Kae Handicapped Centre Primary School** Provides free tuition and boarding, physical therapy, and livelihood support for children with severe and multiple disabilities
- Touching Tiny Lives Trust** Provides integrated care to malnourished children under five and their caregivers in rural Mokhotlong and Thaba Tseka districts

In 2021 and 2022, The ELMA Community Grants Program supported 117 CBOs reaching 1.3 million people across 13 countries.

In addition, ELMA provided emergency funding to 10 community-based grantee partners responding to floods and civil unrest in South Africa, and the Ebola outbreak in Uganda.

These ECGP partners are: Dlananathi, Isibani Sethemba, Kliptown Youth Program, Malamulele Onward, Refugee Children’s Project, Siyakwazi, The Sunshine Centre Association, Thanda After-School, The Ububele Educational and Psychotherapy Trust, and Woza Moya Community Development Project

MALAWI

Children of Blessing Trust Provides therapeutic and health services, nutrition, and specialized education for disabled and malnourished children

Foundation for Community and Capacity Development Provides access to ECD services, community prevention of mother-to-child transmission of HIV, adolescent HIV prevention, and vocational skills training for youths

KINDLE Orphan Outreach Provides healthcare and educational support for orphaned and vulnerable children in partnership with local communities

Life Concern Organization Advocates against child sexual abuse, increases access to education, and promotes sexual and reproductive health and rights among orphans and vulnerable children and adolescents in Rumphi

Mangochi Orphans Education and Training Provides free quality primary school education, nutrition, and essential support to orphans and vulnerable children

Matunkha Development Trust Provides access to education, health services, and psychosocial care for orphans and vulnerable children

Rights Institute for Social Empowerment Provides quality health and education services for children, adolescents, and women

Urunji Child-Care Trust Provides malaria prevention and essential nutrition for children in rural Lilongwe District

Youth for Development and Productivity Provides essential services to children and youth and ensures food security for vulnerable families in rural communities

MOZAMBIQUE

Associação Agrária para a Redução da Pobreza Absoluta de Chongoene Provides children and families with early education, child protection, psychosocial, and HIV services, livelihood support, and prevention information on gender-based violence and child marriage

Associação Comunidade Mocambicana De Ajuda Provides support for the education, health, nutritional status, and well-being of orphans and vulnerable children and their families

Associação Hixikanwe Provides integrated support and care for children and families affected by HIV/AIDS in seven districts of Maputo Province

Associação Juvenil Para Desenvolvimento Comunitário Provides parents, youth, and women living in neighborhoods prone to water-related diseases with access to early childhood care, sanitation, sexual and reproductive health and HIV education services, and livelihood support

Associação Kindlimuka Provides education, health, nutrition, and psychosocial support to orphans and vulnerable children and their families in four districts of Maputo Province

Associação Movimento Social Sao Gabriel Provides early childhood development and education services, nutritional support, and after-school activities for vulnerable children

Associação Para o Desenvolvimento Comunitário Kuwangisana Provides ECD, remedial education, and prevention of mother-to-child transmission of HIV services to women and children living in rural Sofala Province

Associação Wona Sanana Provides technical support to ECGP Philanthropies staff and community-based organizations in Mozambique during the grant development and grant management processes



Siyakwazi / Franc Moulit

In 2021, **Siyakwazi** assessed 1,627 children at area schools and ECD centers in the rural UGU District, KwaZulu-Natal, South Africa to identify gaps in learning. In addition, 82 children with disabilities and learning barriers were supported to attend local ECD centers.

Mozambique continued

Kuvumbana Associação Provides early education, livelihood support, and access to child protection, health, and counseling services to vulnerable orphans, caregivers, and victims of gender-based violence and child marriage

NAMIBIA

The Associação for Children with Language, Speech and Hearing Impairments of Namibia Provides quality, specialized education and other services to disadvantaged deaf and hearing impaired children and their caregivers

Cheshire Homes (Namibia) Trust Provides term-time accommodation, therapeutic treatment, and assistance to children with disabilities in the Zambezi and Kavango regions

Light for The Children Provides nutrition, education, and home-based care to orphans and other vulnerable children in Gobabis

Oonte Orphans and Vulnerable Children Organization Provides nutrition, education, and psychosocial support to orphans and other vulnerable children in Ondangwa

The Promiseland Trust Provides access to education and nutritional support to children in Kuisebo township, Walvis Bay

Walvis Bay Child and Family Centre Provides education, therapy services, and psychosocial support for physically and intellectually disabled children in Walvis Bay

RWANDA

Centre Cyprien et Daphrose Rugamba (CECYDAR) Provides rehabilitation, education, and skills training to vulnerable children living on the streets before reunifying them with their families

Centre Marembo Organization Provides education, shelter, medical care, and re-integration of vulnerable girls rescued from the streets in Kigali and surrounding communities

We-ACTx For Hope Provides education, medical care, food, and psychosocial support to children living with HIV/AIDS in Nyarugenge, Kicukiro, and Gasabo districts

SOUTH AFRICA

Bizweni Centre for Children with Disabilities Provides tailored ECD services, nutrition, and transport support to children with disabilities and their families in Somerset West, Western Cape

Breede Valley Association for Persons with Disabilities Provides services to improve the quality of life of children and youth with disabilities and their families

Bulungula Incubator Provides children with quality education, nutrition, health, and basic services in rural Xhora Mouth Administrative Area in Eastern Cape

The Butterfly Art Project Provides psychosocial support through expressive art therapy for children who experience multiple forms of trauma, and trains caregivers and teachers to facilitate these sessions

Pride Community Health Program (PRICHO) / Jason J. Mulikita



In 2021 and 2022, **Pride Community Health Program (PRICHO)** facilitated access to community-based HIV counseling and testing services for over 4,000 adolescents and young people living in Kafue District, Zambia.

THE ELMA COMMUNITY GRANTS PROGRAM

South Africa continued

Community Action Towards a Safer Environment Provides after-school care and youth development to vulnerable young children and adolescents living in Hanover Park, Western Cape

ChildSafe Equips parents, caregivers, service providers, and children to reduce preventable childhood injuries and accidents



Centre Cyprien et Daphrose Rugamba (CECYDAR) / Serrah Galos

In 2021, **Centre Cyprien et Daphrose Rugamba (CECYDAR)** provided rehabilitation and psychosocial support to 184 children living on the streets, educational support to 108 children, and livelihood skills to 362 parents in Kigali, Rwanda.

Dlalanathi Provides psychosocial support for children, youth, and their families through play therapy, support groups, training, and mentorship in Willowfontein and uMgungundlovu districts

Enlighten Education Trust Provides educational, recreational, and youth leadership development support to children in underserved communities in the Overstrand District, Western Cape

Feed The Babies Fund Provides nutrition and ECD support services to children, and training for ECD practitioners

Ga-Mokaba Reading Room Provides after-school education and nutrition support, and increases access to community healthcare for children and their families

Hantam Community Education Trust Provides a continuum of integrated educational and humanitarian care for children, youth, and their families living on farms

HI HOPES Provides early intervention services and support to hearing-impaired infants and their families in six provinces

Isibani Sethemba Provides child protection services, livelihoods support, and palliative care to children and their families

Kliptown Youth Program Provides after-school and nutrition support, computer literacy, recreational activities, and vocational development support to children and youth in the densely populated township of Kliptown, Soweto

Kuyasa Horison Empowerment Provides integrated after-school care, ECD services, nutrition support, and youth development to vulnerable children and adolescents living in Kayamandi, Stellenbosch, Western Cape

Lesedi Educare Association Provides children with access to quality ECD in rural and urban communities

Malamulele Onward Provides comprehensive rehabilitation therapy to children with cerebral palsy who live in underserved rural areas

Musicworks Provides psychosocial support through music therapy to children who experience trauma

Net vir Pret Provides integrated after-school care and youth development to vulnerable young children and adolescents living on farms

The Rachel Swart Fund Provides assistive devices for children with physical disabilities

Refugee Children's Project Provides educational and nutrition support, vocational skills training, and child protection services for refugee children and their families

Siyakwazi Provides quality, specialized early childhood services to children with disabilities and their caregivers

The Sunshine Centre Association Provides ECD services to children with disabilities and training for ECD practitioners and parents to promote inclusive education

South Africa continued

- Thanda After-School** Provides ECD, after-school care, and livelihood support to families
- The Ububele Educational and Psychotherapy Trust** Provides community-based psychological care and support to children, pregnant women, and mothers in Alexandra and surrounding areas in Johannesburg
- Uhambo Foundation** Provides access to appropriate assistive devices and essential services for children with disabilities, promotes disability-inclusivity in their communities, and provides training to healthcare professionals
- Western Cape Forum for Intellectual Disability** Provides advocacy, resources, and support services to organizations that serve children with intellectual disabilities
- The Westlake United Church Trust** Provides quality ECD, support of orphans and vulnerable children, and a community outreach program and support center for disadvantaged families
- Woza Moya Community Development Project** Provides quality home-based care and essential support to orphaned and vulnerable children and their families in rural Ofafa Valley
- Zisize (Ingwavuma) Educational Trust** Provides education, health, nutrition, and psychosocial support to children and their families living in rural areas

TANZANIA

- Forever Angels** Provides medical care and nutrition to orphans and vulnerable babies in Mwanza
- Malaika Orphanage Foundation** Reintegrates children living on the streets into the community and provides a home, education sponsorship, and medical care to those with no caregivers
- Umoja** Provides children who have dropped out of formal education with skills training, feeding, medical care, and psychosocial support

UGANDA

- Adina Foundation** Provides physiotherapy, access to surgery, and education to children with mobility disabilities as well as economic empowerment to their parents and communities
- African Community Center for Social Sustainability** Provides support to orphans and vulnerable children and community members through education, healthcare services, and economic empowerment activities in Nakasongla, Kiboga, Luweero, Nakaseke, and Wakiso districts
- Arlington Academy of Hope** Provides opportunity for school-age children to access meals, healthcare, and basic education in Buduuda, Manafwa, and Namisindwa districts
- Art of a Child** Provides quality education, feeding support, and access to safe learning spaces to children and youth living in informal settlements



In 2023, The ELMA Community Grants Program will spin out into a separate, South Africa based, sub-Saharan Africa focused grantmaking organization, Masana wa Afrika.

Masana wa Afrika – meaning “the warmth of the sun embraces Africa” in Xitsonga – will invest in and strengthen the capacity of community-based organizations serving children and families across Africa.

Masana wa Afrika will also serve as a funding vehicle for other philanthropists committed to supporting African community-based organizations.

- Bless a Child Foundation** Provides access to treatment, palliative, and psychosocial care to paediatric cancer patients and support to their caregivers in Kampala and Gulu districts
- Brick by Brick Uganda** Provides access to quality education, adolescent health, and maternal and newborn care in Rakai District
- Family of Africa** Provides education sponsorship, nutrition, and medical care to children born in prison and other vulnerable children and youth in Kampala, Mukono, and Luwero districts
- Fr. Alex You Memorial School** Provides quality nursery and primary education and holistic development for communities in Mubende district
- Girls to Lead Africa** Provides mentorship, education scholarships, leadership and life skills training, and sexual and reproductive health and rights education to girls at risk of child marriage and teenage pregnancy
- Girl Up Initiative Uganda** Provides adolescents and young women opportunities to thrive and succeed as leaders in their communities through holistic education and livelihood support in Kampala district

Uganda continued

- Health Child** Provides ECD services, feeding support, healthcare to children and mothers, and livelihood support to women and girls
- Kabubbu Development Project** Provides healthcare and education services to orphans and vulnerable children, and livelihood support to community members to improve their social and economic well-being in Wakiso District
- Karon Relief and Development Foundation** Provides education, medical care, and nutritional support to vulnerable children, and vocational skills training
- Katalemwa Cheshire Home for Rehabilitation Services** Provides comprehensive rehabilitation, nutrition, and education support to children with disabilities, and entrepreneurship training to their caregivers
- Kawempe Home Care** Provides medical care, education sponsorship, and psychosocial support to vulnerable children, youth with cancer, and those affected by HIV-AIDS
- Kyaninga Child Development Centre** Provides therapy care, assistive devices, and access to quality education to children with disabilities
- Mukisa Foundation** Provides therapeutic care, medical treatment, and educational support to children and youth with special needs and their caregivers

- Soft Power Education** Provides safe learning environments and education for children in rural populations and training for community members to develop their own sustainable livelihood projects
- Soletterre Strategie di Pace ONLUS** Provides palliative therapy to vulnerable children with cancer and supports children in refugee host communities to access education, psychosocial support, and healthcare
- SOUL Foundation** Provides education sponsorship to children and skills training for community members, especially women
- Sponsorship of Orphans Uganda Project** Provides quality education, nutrition, and shelter to orphans and vulnerable children and livelihood support to their parents in six Eastern districts
- United Future Foundation** Provides quality education, medical care, feeding, and psychosocial support to vulnerable children
- Wakisa Ministries** Provides accommodation, medical care, nutrition, education sponsorship, counseling, and life skills training to pregnant teenage girls in Kampala and Wakiso districts
- Wells of Hope Ministries** Provides educational, psychosocial, medical, and feeding support to children of prisoners and similar care to their parents

ZAMBIA

- Africa Directions** Provides a wide range of services including psychosocial support, health services, and life skills training to young people ages 4-26 in Lusaka and North-Western provinces
- Children in Distress (CINDI Kitwe Trust)** Provides essential services to children and their caregivers in peri-urban communities
- Lubuto Library Partners** Provides education, psychosocial support, economic empowerment, creative self-expression, and health information and services to children and adolescents
- Mapalo Support Group** Provides support to HIV+ mothers and HIV-exposed infants with best feeding and nutrition practices in order to eliminate mother-to-child transmission of HIV
- Pride Community Health Organization** Provides access and early uptake of antenatal care, HIV treatment, and care to vulnerable communities
- Special Hope Network** Provides special education and therapeutic services to children with intellectual disabilities and support to their caregivers
- Tiny Tim and Friends** Provides medical, nutritional, and psychosocial support to HIV+ orphans, vulnerable children, and pregnant women
- Village of Hope - Mongu Branch** Provides nutrition, medical care, education, and psychosocial support to orphans and vulnerable children and their families in Western Province

ZIMBABWE

- Chiedza Child Care Centre** Provides educational, health, and livelihood support to vulnerable children and their caregivers
- Chiedza Community Welfare Trust** Provides educational, healthcare, and psychosocial services to children in underserved rural communities
- Child Protection Society** Provides essential health, education, and protection services to children in high-density suburbs
- Edward Ndlovu Memorial Trust** Provides access to educational resources in rural and urban schools and communities of Gwanda district, Matabeleland South Province
- Heather Chimhoga Orphan Care** Provides education, nutrition, health, and livelihood support to children and their families
- Kidzcan, Children's Cancer Relief** Provides medical and psychosocial care to children living with cancer and blood disorders
- NZEVE Deaf Children's Centre** Provides holistic education and psychosocial interventions for deaf children and their families
- Rozaria Memorial Trust** Provides educational, health, and nutritional support to vulnerable children



The ELMA Relief Foundation

invests in relief efforts anywhere in the world, with an emphasis on children in Africa



Grantee
Alliance for International Medical Action (ALIMA)

Geography
Chad

Select investments contracted in 2021 & 2022

These investments

address the urgent needs of crisis-affected communities, and support the rebuilding of communities following a disaster

- ACFS Community Education and Feeding Scheme**
South Africa
Contribution for humanitarian response to the unrest in Gauteng
- Action Against Hunger**
Kenya
Project support for sustainable access to Water, Sanitation, and Hygiene services for populations affected by recurrent droughts, desert locust invasions, and COVID-19 in Isiolo County
- Afar Pastoralist Development Association**
Ethiopia
Project support to provide Water, Sanitation, and Hygiene, veterinary relief assistance, and livelihood recovery for conflict affected pastoralists in Erebti, Afar Region
- Arcenciel**
Lebanon
Project support to holistically repatriate over 375 women and children seeking to return to Ethiopia, and provide targeted humanitarian relief for women and children from other migrant and refugee communities

- Clinton Health Access Initiative**
Ethiopia
Project support to provide technical assistance to the Federal Ministry of Health to implement its Conflict Related Health Emergency Response Plan to help restore essential health services
- Uganda*
Project support to provide infection prevention and control commodities, and medical supplies to enhance preparedness and infection control in 21 health facilities in Mubende region for Ebola outbreak response
- Global Links**
Nicaragua
Contribution to re-equip and re-establish Nicaraguan health services in the clinics and hospitals destroyed by excessive flooding and Hurricanes Eta and Iota
- Ilitha Labantu**
South Africa
Contribution to support Ilitha Labantu's response to the fires in the Langa Township in Cape Town
- Jerusalem Children and Community Development Organization**
Ethiopia
Project support to provide an emergency response to internally displaced people due to conflict in North Shewa Zone
- Mothers and Children Multisectoral Development Organization (MCMDO)**
Ethiopia
Project support to provide health, Water, Sanitation, and Hygiene, and livelihood response in three woredas of South Wollo zone of the Amhara region



Select investments contracted in 2021 & 2022

- NPH-USA** Project support for cholera response at St. Damien's Pediatric Hospital, Haiti's premier children's hospital
Haiti
- Refugee Social Services** Contribution for financial relief to vulnerable refugees, asylum seekers, and undocumented migrants affected by the recent civil unrest in KwaZulu-Natal
South Africa
- RefugePoint** General support for an organization supporting refugees to access resettlement and self-reliance services and opportunities, while also supporting and influencing the humanitarian sector to increase refugee self-reliance programming
Global

- Seed Global Health** Project support for Ebola outbreak response and preparedness
Uganda
- The Solidarity Fund** Contribution for humanitarian response to the unrest in Gauteng Province and KwaZulu-Natal
South Africa
- Training and Resources in Early Education (TREE)** Project support to help rebuild operations and programs following the violent unrest in KwaZulu-Natal
South Africa
- Trust for Health Systems Planning and Development** Project support to respond to the organization's immediate needs following the civil unrest in KwaZulu-Natal
South Africa

- The Unlimited Child** Project support to provide children and families with food, hygiene, and sanitation products following the violent unrest in KwaZulu-Natal and Gauteng
South Africa
- Waqful Waqifin Foundation (Gift of the Givers Foundation)** Contribution to stabilize and rebuild ECD centers that were damaged in the KwaZulu-Natal flooding
South Africa
- Waqful Waqifin Foundation (Gift of the Givers Foundation)** Contribution for humanitarian response to the unrest in Kwazulu-Natal and Gauteng
South Africa

- Waqful Waqifin Foundation (Gift of the Givers Foundation)** Contribution to respond to the immediate needs of those impacted by torrential flooding in KwaZulu-Natal and Eastern Cape
South Africa
- Wits Health Consortium** Project support to restore services at the Perinatal HIV Research Unit through replacement of small equipment and restoring water and electricity supply damaged through recent riots and looting in Gauteng
South Africa



Nancy Farese on behalf of RefugePoint

In 2021 and 2022, The ELMA Relief Foundation provided support to nine partners responding to emergencies affecting South Africa, including widespread civil unrest, flooding, and wildfires.

Partners distributed 176,654 food parcels, 38,000 hot meals, 15,185 cash transfers, 30 truckloads of potable water, 250 blankets, and 450 sanitary/hygiene kits. Partners also supported the reopening of an ECD center and Perinatal HIV Research Unit and provided grant and in-kind donations to 12 pharmacies, 547 small businesses, 300 ECD centers, and 39 other non-profit organizations to resume operations.

These ELMA partners are: ACFS Community Education and Feeding Scheme, Ilitha Labantu, Refugee Social Services, The Solidarity Fund, Training and Resources in Early Education (TREE), Trust for Health Systems Planning and Development, The Unlimited Child, Waqful Waqifin Foundation (Gift of the Givers Foundation), and Wits Health Consortium



The ELMA Growth Foundation

invests in the growth of
African organizations that
serve communities
experiencing economic
hardship



Grantee
Root Capital

Geography
Rwanda



These investments support organizations that have a demonstrated track record of social impact and a realizable strategy for scale and sustainability

Select investments contracted in 2021 & 2022

- African Leadership Foundation**
Africa

Contribution for the African Leadership Academy's endowment in honor of co-founder Chris Bradford
- Delta Philanthropies**
Zimbabwe

Project support for the Reimagine Rural Africa program, focused on building thriving food secure households, reducing child stunting, and increasing household income by deploying a low-cost and climate resilient farming technique
- myAgro**
Mali, Senegal, Tanzania

General support to expand a training and savings-based agricultural model to reach one million small-holder farmers
- One Acre Fund**
Burundi, Ethiopia, Kenya, Malawi, Nigeria, Rwanda, Tanzania, Uganda, Zambia

General support to a partially sustainable social enterprise providing comprehensive agriculture training, inputs, and financing to farmers
- Project Mercy**
Ethiopia

General support for a holistic community development agency serving 100,000 people in Ytebon and Chacha regions through provision of education, essential healthcare, vocational training, and water and sanitation
- Root Capital**
Kenya, Rwanda, Tanzania, Uganda

Project support to deliver financial training, expand local value chain financing, and support revenue growth and market access of agricultural small and medium enterprises
- Unjani Clinics**
South Africa

General support for a social franchise of nurse-run primary healthcare clinics serving low-income communities

The ELMA Music Foundation

invests in organizations
that use music to improve
outcomes for children and
youth in the United States
and South Africa



Grantee
Youth On Record

Geography
United States



The Door - A Center of Alternatives

These investments support organizations that use music programming to advance youth development

Select investments contracted in 2021 & 2022

- Berklee College of Music**
United States

Project support for need-based scholarships for youth from The ELMA Music Foundation's U.S.-based grantees to attend a four-year undergraduate program
- Ellis Marsalis Center for Music**
United States

General support for an after-school music program providing underserved children and youth from the Ninth Ward of New Orleans the opportunity to study music through arts-focused youth development programs
- The Field Band Foundation**
South Africa

General support for an organization that trains disadvantaged youth in music, dance, administration, and life skills
- Jazz Foundation of America**
United States

Project support for the Agnes Varis Jazz in the Schools Program, which extends the careers of aging artists and brings music to schools, nursing homes, and hospitals nationwide
- Project support to provide emergency assistance to musicians and families rebuilding after Hurricane Ida's impact
- Living Classrooms Foundation**
United States

Project support for after-school music education programming serving disadvantaged children and youth and linking them to broader youth development services in multiple Living Classroom Foundation sites in Baltimore, MD and Washington, DC
- Mama Foundation for the Arts**
United States

General support to an organization uplifting gospel and jazz musical traditions to heal and inspire, with a focus on providing free training and performance opportunities for low-income teenagers in Harlem
- Memphis Equity Through Arts (META)**
United States

Project support to sub-grant and strengthen the capacity of a cohort of community-based organizations with music and youth development programming
- Mind Builders Creative Arts**
United States

General support for an after-school center that includes music programming in creative youth development and early childhood classes in the Bronx
- The Motivational Edge**
United States

General support for an arts-based youth development organization serving disadvantaged youth, and youth in the child welfare and juvenile justice system

THE ELMA MUSIC FOUNDATION

Select investments contracted in 2021 & 2022



Renaissance Youth Center

New York Women's Foundation
United States
Project support for re-granting and capacity strengthening of five women-led organizations providing music and arts programming to advance life outcomes for young women and girls; part of the NYC Fund for Young Women & Girls of Color

Recess Art
United States
Project support for an arts-based diversion program, providing alternatives to incarceration for youth in Brooklyn

Renaissance Youth Center
United States
Project support for the music programming of a community-based youth development organization in Bronx, NY

The Road Recovery Foundation
United States
General support for an organization providing music-based youth development support for young people in New York who are in various forms of state care, either for substance abuse recovery, justice related confinement, or foster care

RYSE
United States
Project support for the Media, Arts, and Culture program of a community-based youth development organization that provides a safe space for creative expression, youth leadership, and social justice in Richmond, CA

Save The Music Foundation
United States
Project support to advance and expand programming to support music education in schools and for justice impacted youth at two Travis Hill Juvenile Justice Centers in New Orleans

Project support for emergency assistance for Greater New Orleans public schools' music education programs in response to pressing needs related to the dual crisis of Hurricane Ida and COVID-19

Between 2020 and 2022, the nine ELMA grantees who make up the Music and Youth Development Alliance (MYDA), served over 7,000 young people across the United States. MYDA organizations provide virtual and in-person music and arts programming, community health services, educational support, leadership opportunities, and other youth development programming.

The MYDA coalition of community-based organizations includes: A Place Called Home, The Door - A Center of Alternatives, Guitars Over Guns, Mind Builders Creative Arts, Neutral Zone, Renaissance Youth Center, RYSE, Youth Empowerment Project, and Youth on Record



Save the Music Foundation



Select investments contracted in 2021 & 2022

- Soulsville Foundation**
United States

Project support for Stax Music Academy, which provides extended day and after-school music instruction and comprehensive youth development programming to youth in Memphis
- Spy Hop Productions**
United States

General support for an organization that offers music/arts programming as a component of complementary youth development services in Utah

- Youth Empowerment Project**
United States

Project support to expand access to creative and technical resources for after-school music and arts programming in New Orleans

Relief support to cover unforeseen expenses incurred as a result of Hurricane Ida

The ELMA Vaccines & Immunization Foundation

invests in expansion of immunization coverage for children, with an emphasis on Africa

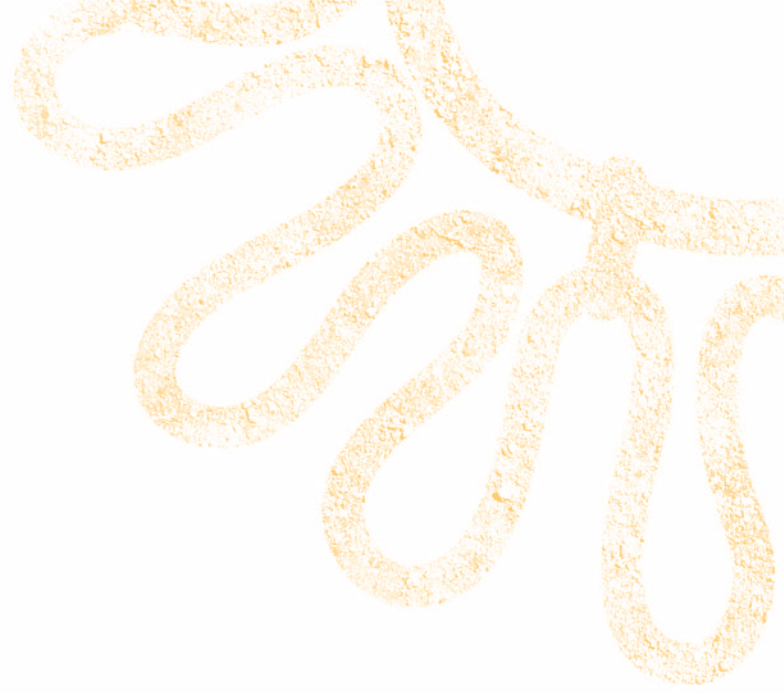


Gavi, The Vaccine Alliance

These investments expand vaccine coverage in Africa

Select investments contracted in 2021 & 2022

- | | |
|--|---|
| Institut Pasteur de Dakar
<i>Africa</i> | Project support to strengthen the delivery unit and information technology infrastructure of this key African public health institution as it scales up vaccine and diagnostics manufacturing |
| JSI Research and Training Institute
<i>Kenya, Tanzania</i> | Project support to build the capacity of health teams to identify, prioritize, and respond to supply chain problems efficiently in order to improve vaccine availability and potency |
| South African Medical Research Council
<i>South Africa</i> | Project support to lead a consortium of African universities and organizations to develop the technologies for mRNA vaccine manufacturing and to create a pipeline of novel mRNA vaccines (including a second generation COVID-19 mRNA vaccine) |
| United Nations Foundation
<i>Angola, Chad, Ethiopia, Gabon, Guinea, Nigeria, South Sudan</i> | Project support to strengthen measles outbreak preparedness, response, and recovery capacity |



The ELMA South Africa Foundation

invests in organizations
supporting development and
progress in South Africa

FOCUS AREA

Supporting the Constitution
Gender Justice



Grantee
The Black Sash Trust

Geography
South Africa

Focus Area
Supporting the Constitution

Select investments contracted in 2021 & 2022

Supporting the Constitution

These investments support organizations working to realize the constitutional rights of everyone living in South Africa

The Black Sash Trust
South Africa
General support for an organization undertaking advocacy and community mobilization to realize human rights, particularly socio-economic rights, and democratic governance and accountability

Centre for Analytics and Behavioural Change
South Africa
General support for an organization actively countering online misinformation, divisive rhetoric, and narrative manipulation that undermines democratic stability and social cohesion

Corruption Watch
South Africa
General support for an organization encouraging and enabling informed public participation in opposing corruption, with a focus on strengthening engagement and accountability around education, health, and socio-economic rights and state institution

Legal Resources Trust
South Africa
General support for a social justice organization using the law to defend, protect, and enable the constitutional rights of vulnerable, poor, homeless, and landless people and communities

Media Monitoring Africa
South Africa
General support for an organization promoting the development of a free, fair, and ethical media culture, and an informed and engaged citizenry required to promote democracy in South Africa

SECTION27
South Africa
General support for a public-interest law and advocacy center that uses litigation, advocacy, and community mobilization to help realize the rights to education, healthcare, and food security

Socio-Economic Rights Institute of South Africa
South Africa
General support for a public interest law firm that provides professional, research, advocacy, and litigation services to communities, movements, and civil society organizations which seek to enforce socio-economic rights



Gender Justice

These investments aim to ensure that laws, policies, and support services empower survivors, reduce gender-based violence, and promote gender justice

Ilitha Labantu
South Africa
General support for an organization focused on eradicating gender-based violence, and providing support to those affected by violence through counseling, legal services, and engaging communities to prevent abuse through education and empowerment initiatives in the Western Cape

MOSAIC Women's Training Service and Healing Centre
South Africa
General support for an organization providing services to survivors of domestic violence and sexual assault and advocating for survivor-centric approaches to gender-based violence response by first responders, the police, the National Prosecuting Authority, and the courts

Women's Legal Centre
South Africa
General support to a womxn-focused law center conducting constitutional litigation, advocacy, and direct legal support on gender issues

The ELMA Caribbean Foundation

invests in healthcare, climate resilience, and disaster response in the Caribbean



Caribbean Climate Smart Accelerator

Select investments contracted in 2021 & 2022

- Caribbean Climate Smart Accelerator** Caribbean General support for an organization focused on advancing climate change resilience across the Caribbean
- Catholic Relief Services - United States Conference of Catholic Bishops** Caribbean Project support for an initiative to strengthen capacity and provide resources to local organizations responding to emergencies in the Caribbean
- Clara Lionel Foundation** Caribbean Project support for the Climate Resilience Initiative, focused on preparing communities to withstand hurricanes and other disasters
- NPH-USA** Haiti General support for St. Damien Pediatric Hospital, Haiti's premier children's hospital

Grantee
Caribbean Climate Smart Accelerator

Geography
Caribbean



The ELMA Climate Foundation

invests in organizations
and initiatives combatting
climate change

Tenure Facility *Global* General support to an organization that finances and supports Indigenous organizations to secure land tenure, with the additional goal of protecting 50 million hectares of tropical forest in Indigenous communities by 2027



Grantee
Tenure Facility

Geography
Mozambique

A commitment to evidence

ELMA has an ongoing commitment to Measurement and Evaluation (M&E) in order to assess and improve the social returns on our investments. Evaluations supported by ELMA focus on informing decision-making and learning, both for ELMA and the field at large.

We value different forms of evaluation at different stages of a program. What is most crucial is that evaluations are “fit-for-purpose” — that is, the purpose, use, and users of an evaluation inform its design, resourcing, and timing. We believe in the judicious use of resources and prioritize the evaluation of investments that are strategically important and/or that have the potential to influence policy, funding, and practice. This in turn requires a strong commitment to using and sharing evidence generated from evaluations, as well as a process that is collaborative and consultative with internal and external stakeholders.



The Unlimited Child / Mlungisi Mbele

M&E partnerships in 2021 and 2022

Process and impact evaluations are often integrated into programs that ELMA supports. In addition, independent M&E partners below provide additional insights on the impact of ELMA’s investments.

Innovations for Poverty Action
Uganda Measurement, evaluation, and learning support to ELMA and our partners implementing ECD programs and practitioner training in Uganda

South African Medical Research Council
South Africa Evaluation of Mphatlalasane, an ELMA-funded sexual, reproductive, and maternal and newborn health program. Evaluation will assess the program’s impact on newborn mortality and mothers’ experience of care, and help identify factors that contribute to quality improvement.

University of KwaZulu-Natal, Centre for Rural Health
South Africa Evaluation of the implementation and effectiveness of electronic integrated management of childhood illness compared to the standard paper-based approach in primary healthcare clinics

University of Manitoba
Kenya, Malawi, Nigeria, Tanzania Evaluation of ELMA-funded program NEST360 (Newborn Essential Solutions and Technology) to improve the care and survival of small and sick newborns. In partnership with NEST360, the evaluation will validate assessments of the impact of NEST360 on newborn mortality.

William Marsh Rice University
Kenya, Malawi, Nigeria, Tanzania Assessment of the impact of COVID-19 on newborn care in NEST360 sites, including newborn mortality, admissions, and case mix



FXB Rwanda / Sugira Muryango



ELMA Philanthropies provides philanthropic advisory services to The ELMA Group of Foundations

From locations in New York, Cape Town, Johannesburg, and Kampala, our team develops program strategies, identifies and explores investment opportunities, monitors and evaluates investment performance, and manages strategic partnerships for The ELMA Group of Foundations.

[Visit \[elmaphilanthropies.org\]\(http://elmaphilanthropies.org\) to learn more](http://elmaphilanthropies.org)

Our team

United States
 1345 Avenue of
 the Americas
 Suite 2302
 New York, NY
 10105

Valarian Abrams
 Sehrish Bari
 Robyn Calder
 Courteney Cuomo (until 2023)
 Tiffani Greenaway
 Indya Hartley
 Jin Hong
 Ebony Howard
 Sophie Hudicourt
 Simba Jairoso
 Tressa Johnson
 Miina Juvonen
 Janet Kleinbaum
 June Lee
 Anne Magege
 Meron Makonnen
 Socorro Caridad Marxuach
 Izabella Masheyeva
 Sidney McAbee
 Thomas McPartland
 Melissa Morrison
 Peter Morrison
 Bhupinderjeet Multani
 Nebiyu Negussu
 Marion Nturu
 Lauren Slough
 Tarik Ward

South Africa
 Portside, 17th Floor
 4 Bree St.
 Cape Town, 8001

Kimeshin Athiemoolam
 Tracy Cupido
 Joy Dreyer
 Stanley Fletcher
 Heidi Grundlingh
 Danielle Jones
 Nondumiso Mabuya
 Khayaletu Makhubu
 Samantha Malunga
 Ruth Mapara
 Zodwa Mbambo
 Bernadette Moffat
 Thapelo Mpete
 Nokubonga Mtiya
 Sanana Mubebo
 Heather Sherwin
 Juzaida Swain
 Gregory van der Watt
 Khethiwe Mnganga
 Darshana Pema
 Cindy Snyders-Africa
 Jingyi Song
 Carley Symms

304 The Mall Offices
 11 Cradock Ave.
 Rosebank, Johannesburg, 2196

Uganda
 DTB Centre
 17/19 Kampala Rd.
 PO Box 28762
 Kampala

Hellen Ajio
 Ritah Akankwasa
 Bonita Birungi
 Elizabeth Kasujja
 Sarah Kiyemba (until 2022)
 Marie Nakato
 Angela Nsereko
 Peter Oola
 Sara Tumwesigye

Board members

**The ELMA
 Philanthropies
 Services
 (U.S.) Inc.**

Clive Calder
 Robyn Calder
 Larry Cooley
 Meron Makonnen
 Thomas McPartland
 Bernadette Moffat

**The ELMA
 Philanthropies Services
 (Africa) (Pty) Ltd.**

Robyn Calder
 Stanley Fletcher
 Thomas McPartland
 Bernadette Moffat
 Gregory van der Watt

**The ELMA
 Philanthropies Services
 (East Africa) Limited**

Robyn Calder
 Meron Makonnen
 Thomas McPartland

Our values

- Humility and integrity
- Respect for human dignity and diversity
- Pursuit of excellence
- Commitment to partnership
- A results-orientation informed by continuous learning

Centre Cyprien et Daphrose Rugamba (CECYDAR) / Serrah Galos





Centre Cyprien et Daphrose Rugamba (CECYDAR) / Serrah Galos